



WELCOME TO THE GREEN VILLAGE

Presentatie netwerkbijeenkomst NAD

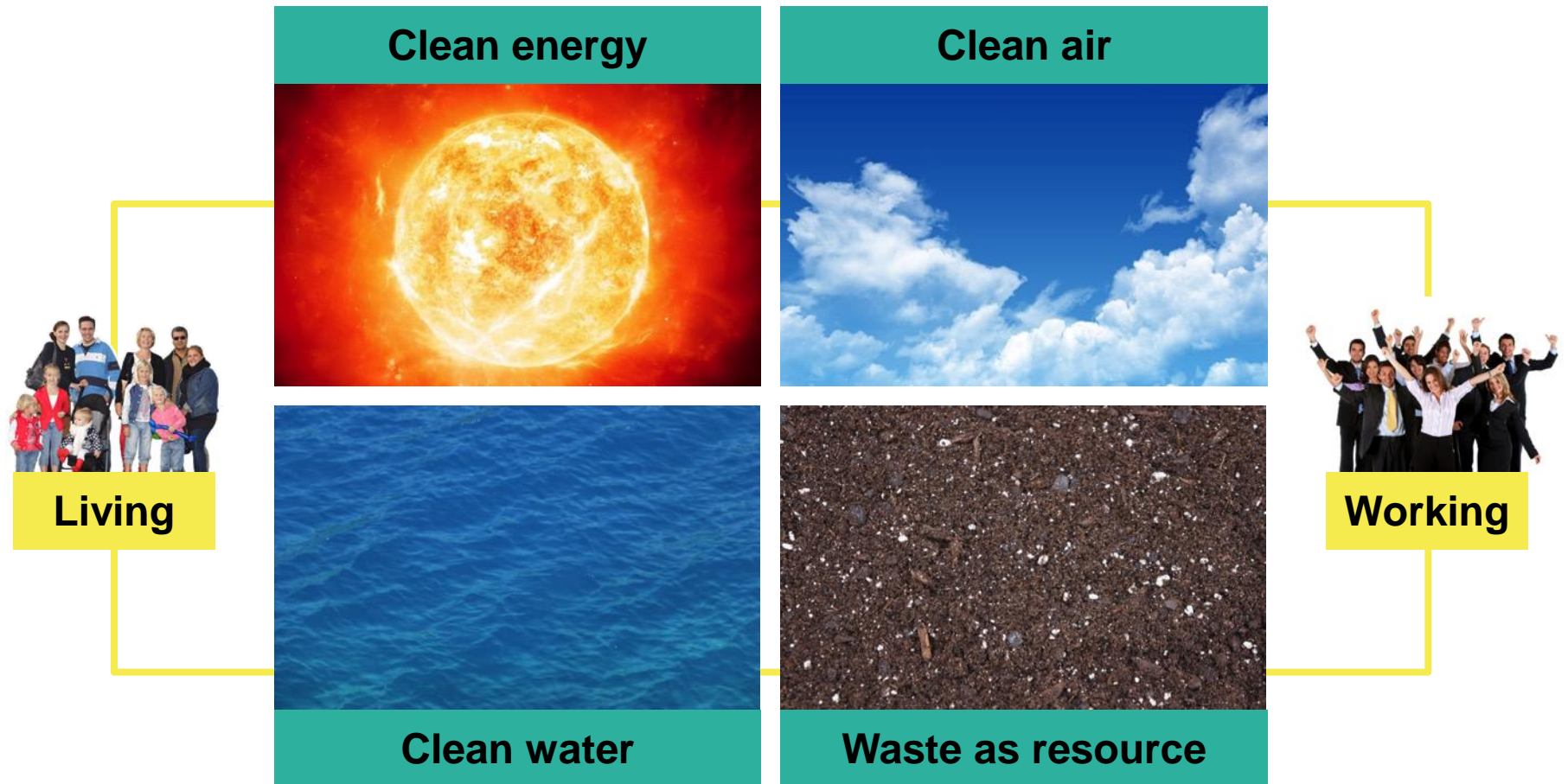
Den Haag, 6 oktober 2016



This is what's happening right now at TU Delft campus



The Green Village's mission is to accelerate paradigm shifts that lead to a sustainable future



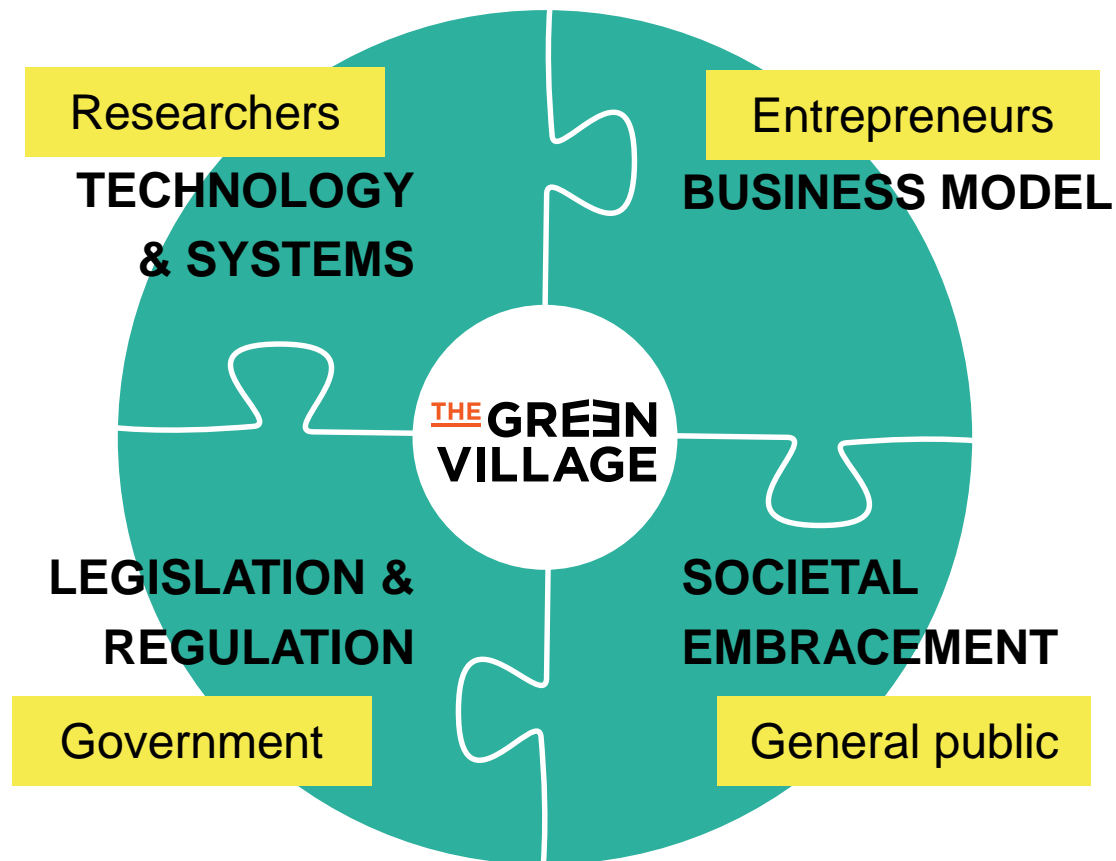
Examples of paradigm shifts range from drinking water to grids for direct current

Examples



>> click to see the animations

Successfully initiating and accelerating paradigm shifts requires *all* stakeholders to join forces

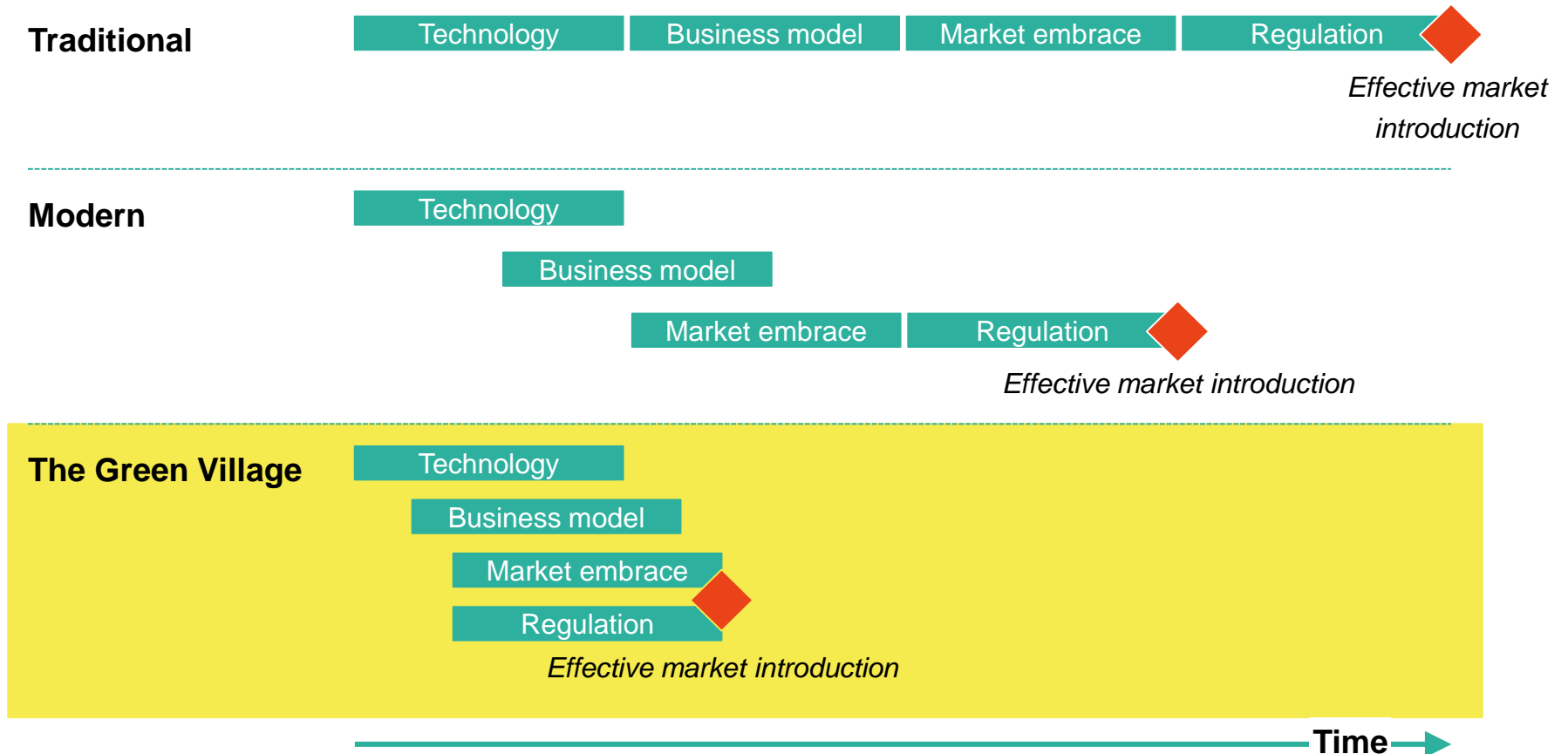


The Green Village provides a platform to connect stakeholders in a unique and inspiring setting



Timely involvement of all stakeholders ensures early insights and shortens the time to market

Acceleration (illustrative)





At The Green Village, government has a dual role with respect to legislation and regulation

TGV as a lab for government

Providing freedom & flexibility to develop innovative concepts

- » All technology and activities are allowed at The Green Village...
- » ...as long as they are **safe and clean**

Participating in innovation and developing fitting frameworks

- » Identify legislative hurdles
- » Formulate new, structural solutions to accelerate implementation

Crisis- en Herstelwet ✓

Switching off several laws and regulations, including most articles in Bouwbesluit

Green Deal ✓



Ministerie van Economische Zaken



Ministerie van Infrastructuur en Milieu



provincie HOLLAND

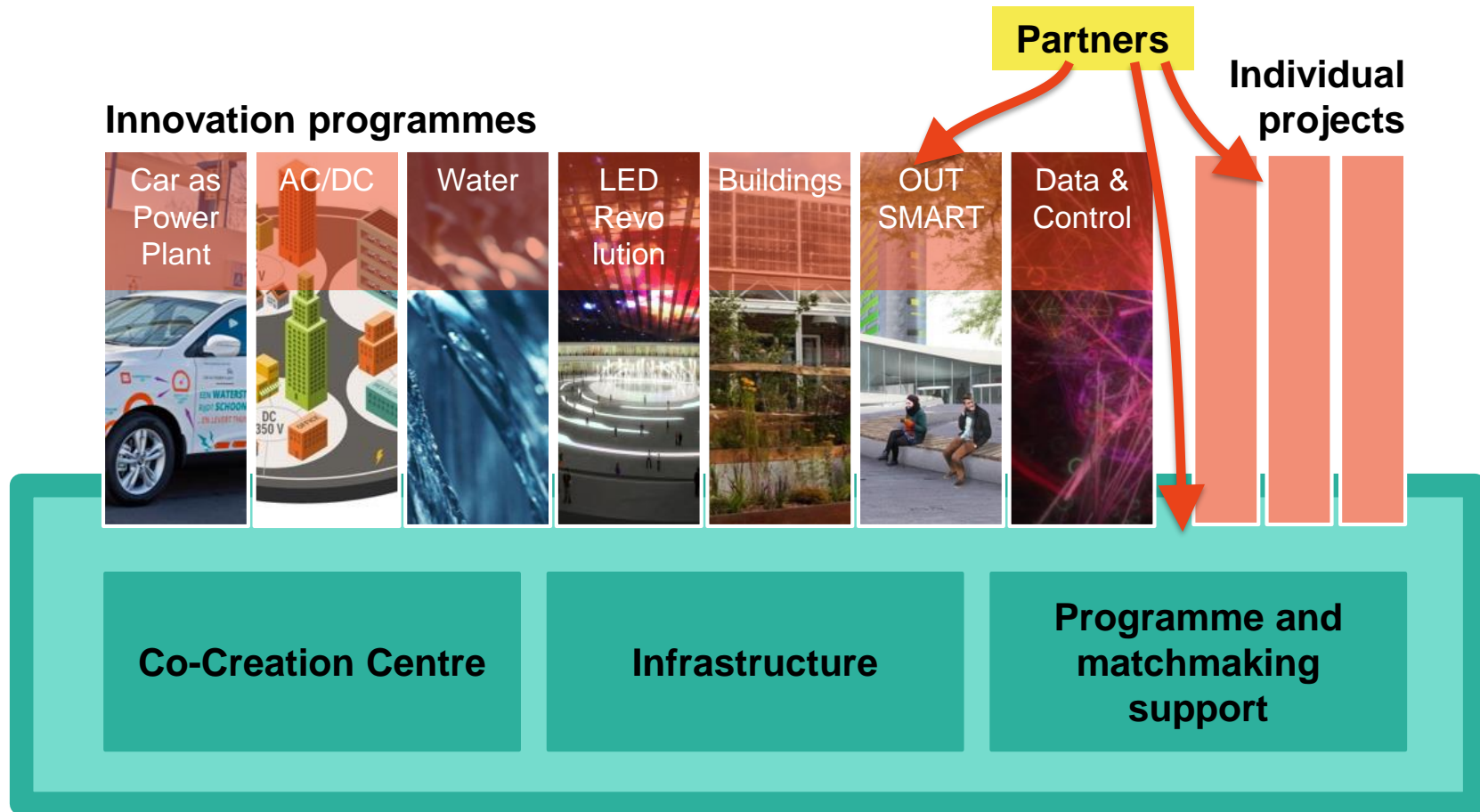


Public partners



Hoogheemraadschap van Delfland

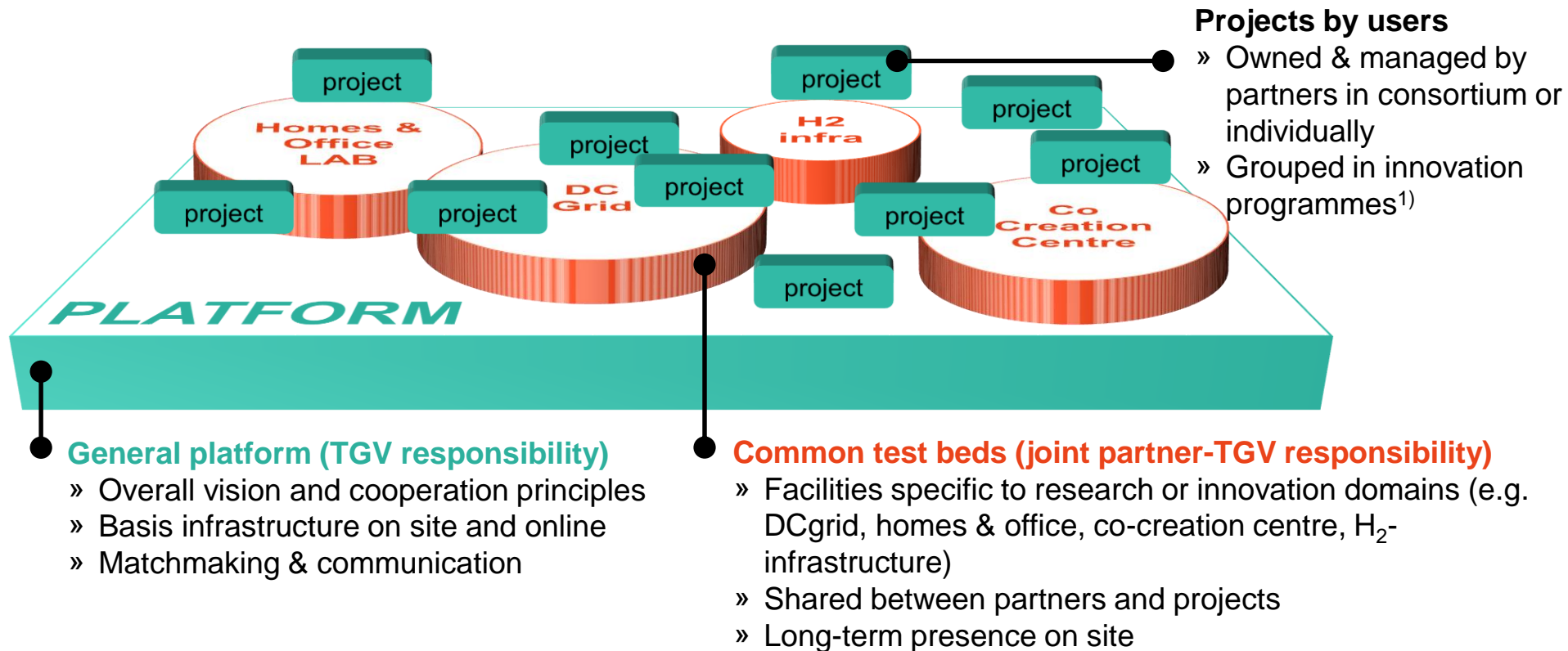
The Green Village acts as a platform that hosts innovation programmes and projects



Platform

The Green Village provides a platform that hosts projects – Test beds for specific domains are set up with partners

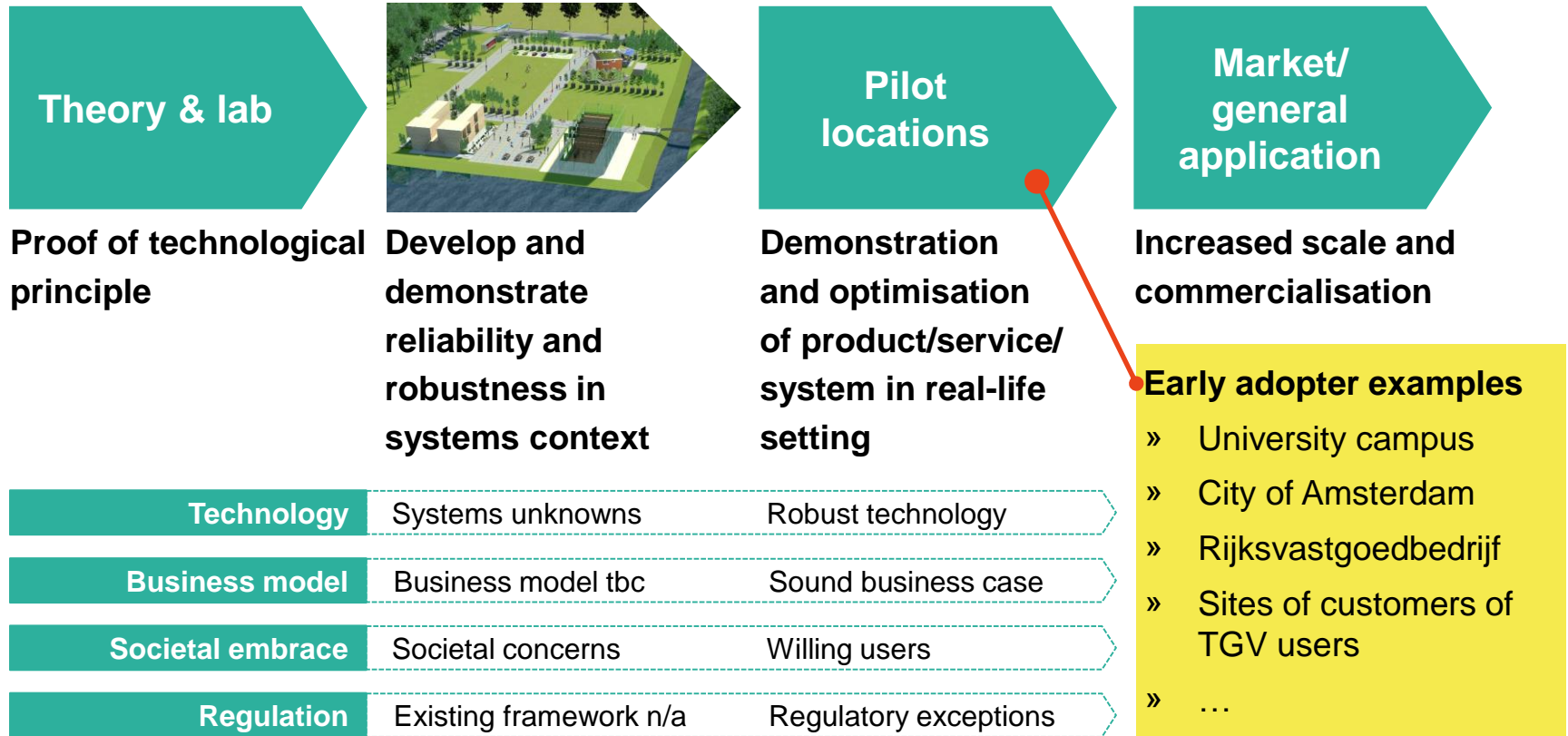
Layers



The Green Village's role is to help paradigm shifting technologies and systems from lab to market

Innovation process

Support by The Green Village team



Residential Living Lab and Office Lab



In addition to the Prêt-à-Loger house, TGV is planning to host modular, flexible homes and offices

Residential living lab and Office Lab facilities

EXISTING: Prêt-à-Loger



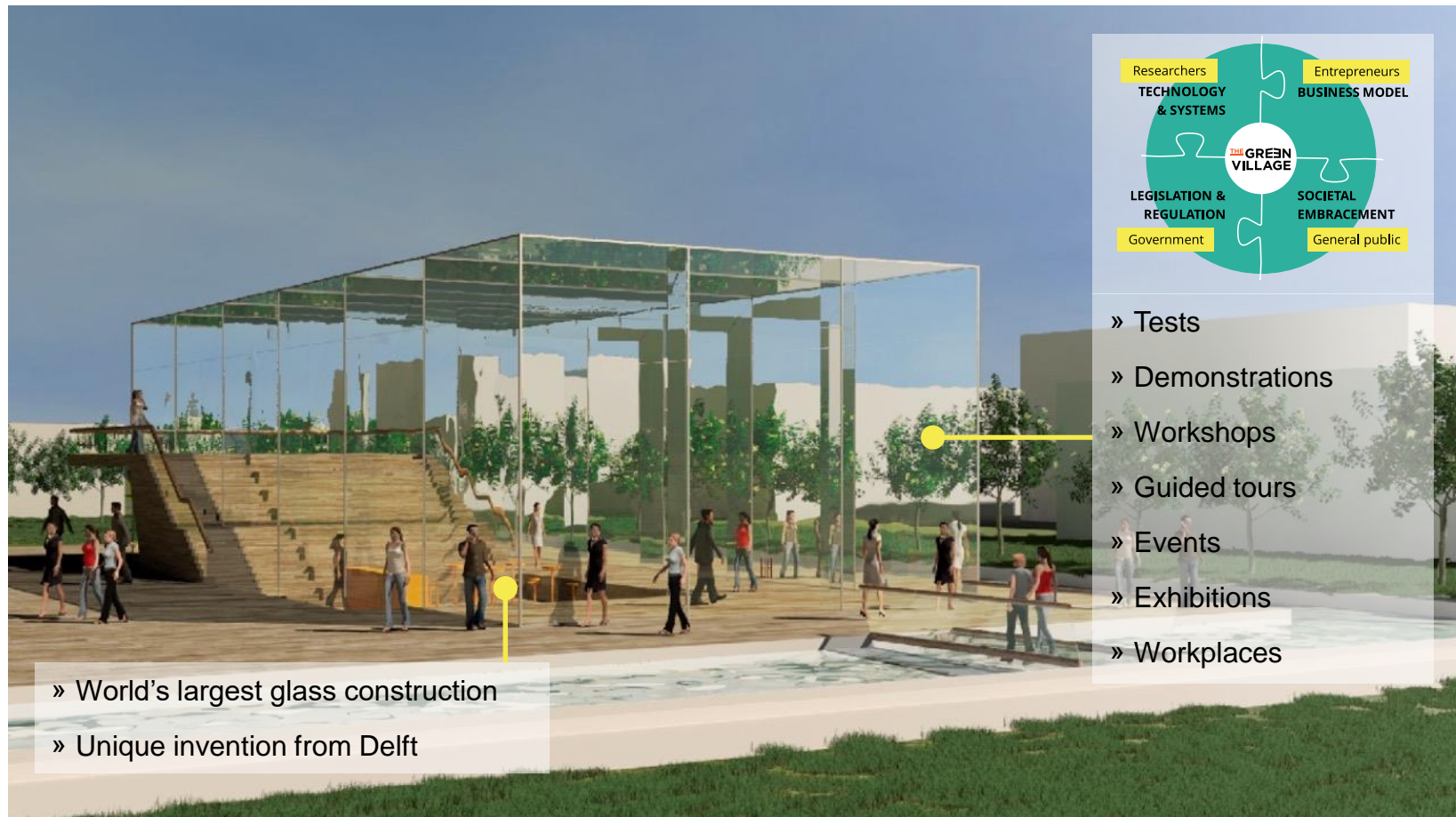
- » Solution for 1.4 million energy consuming Dutch row houses from around 1960
- » Second prize winner at Solar Decathlon
- » On The Green Village site since October 2014
- » Attracting hundreds of visitors each year

NEW: Modular housing and office units

- » Real-life test bed for research and innovation in homes & offices— technological, social, business models
- » Residents (16-18 students) actively participate in projects, and share data for research in other projects and innovations on site (in energy, water)
- » Working and meeting space for 12 persons
- » Showcase for businesses, public, government



The Co-Creation Centre will be the local and regional home for innovators from all directions



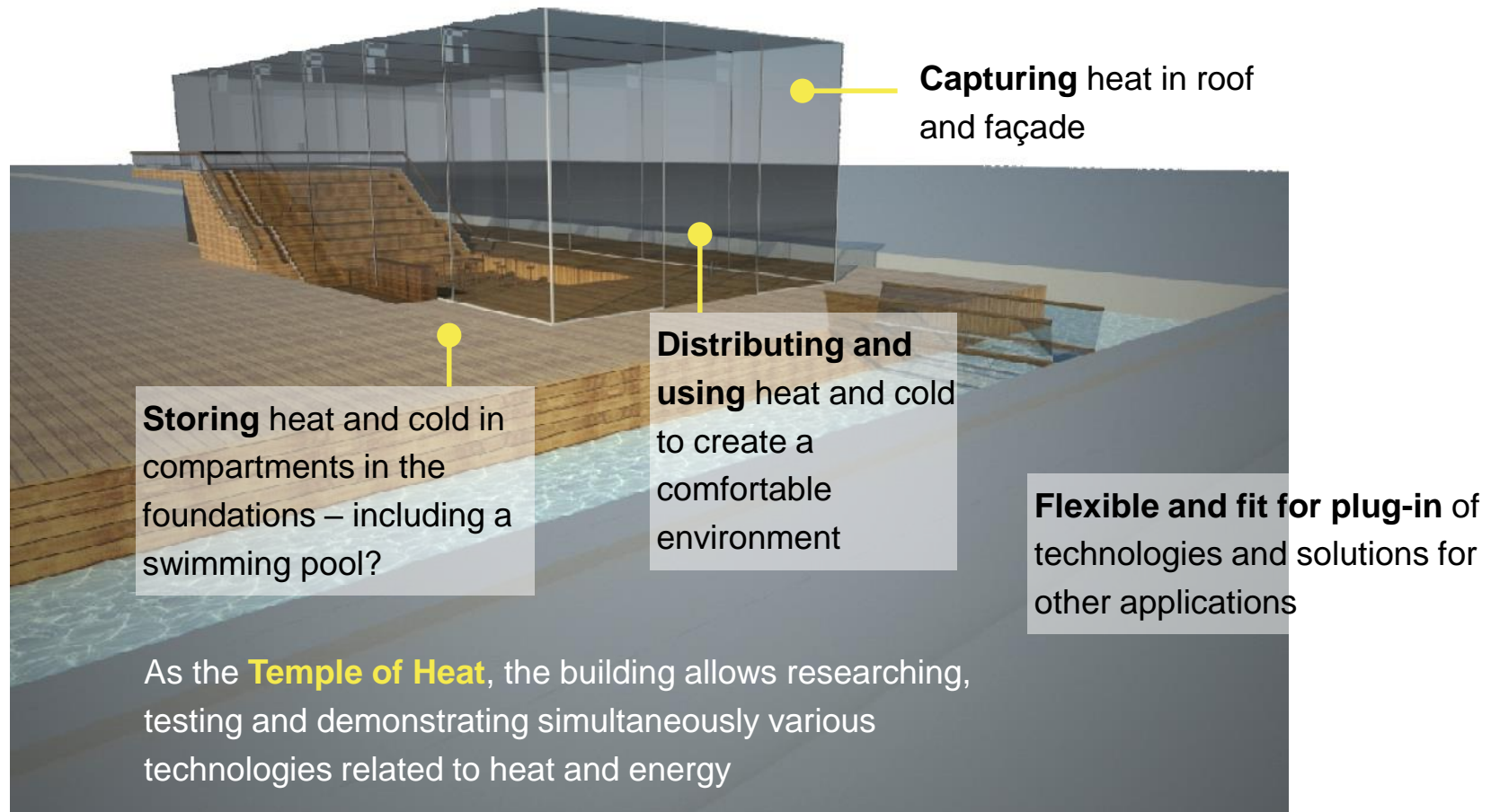
» World's largest glass construction

» Unique invention from Delft

- » Tests
- » Demonstrations
- » Workshops
- » Guided tours
- » Events
- » Exhibitions
- » Workplaces

The building is a dynamic and flexible test bed for innovations, especially on heat – The Temple of Heat

Test bed for heat research and innovations



Find us, contact us and participate!



WWW.THEGREENVILLAGE.ORG



SERGE.SANTOO@THEGREENVILLAGE.ORG



[@THEGRNVILLAGE](https://twitter.com/THEGRNVILLAGE)



[THE GREEN VILLAGE](https://www.linkedin.com/company/the-green-village)



[FACEBOOK.COM/THEGRNVILLAGE](https://facebook.com/thegrnvillage)



WWW.YOUTUBE.COM/THEGRNVILLAGE